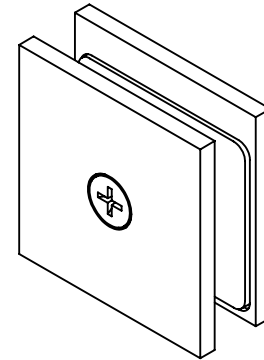
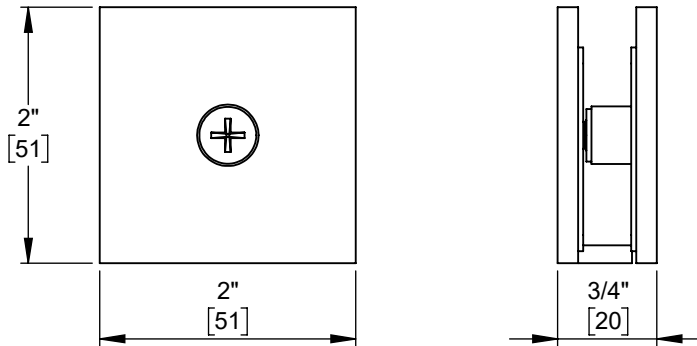


TAIGA

WALL/GLASS CLAMP

portals[®]
luxury hardware & accessories

Product Code: 00305



USE

Stationary glass panels must be supported and attached along at least two sides, but the number of clamps needed to secure a panel depends on its size and weight. Type, number, and placement of clamps should be determined by a qualified installer or fabricator.

MATERIALS

Forged brass body, stainless steel fasteners and accessories, and clear polyurethane gaskets

FEATURES

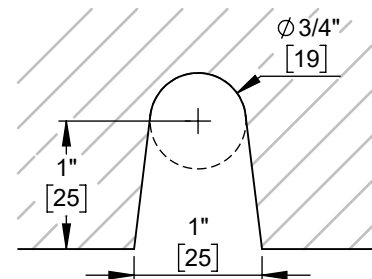
- Solid brass body
- Integrated clear gaskets are compatible with 3/8" and 1/2" glass

CARE

Portals products should be cleaned with water and dried with a soft cloth. Use of harsh or abrasive chemicals may harm finish and will void the warranty.

Template Option A

Wall/Glass Clearance = 0 to 3/16" [5]



Template Option B

Wall/Glass Clearance = 3/16" [5]

