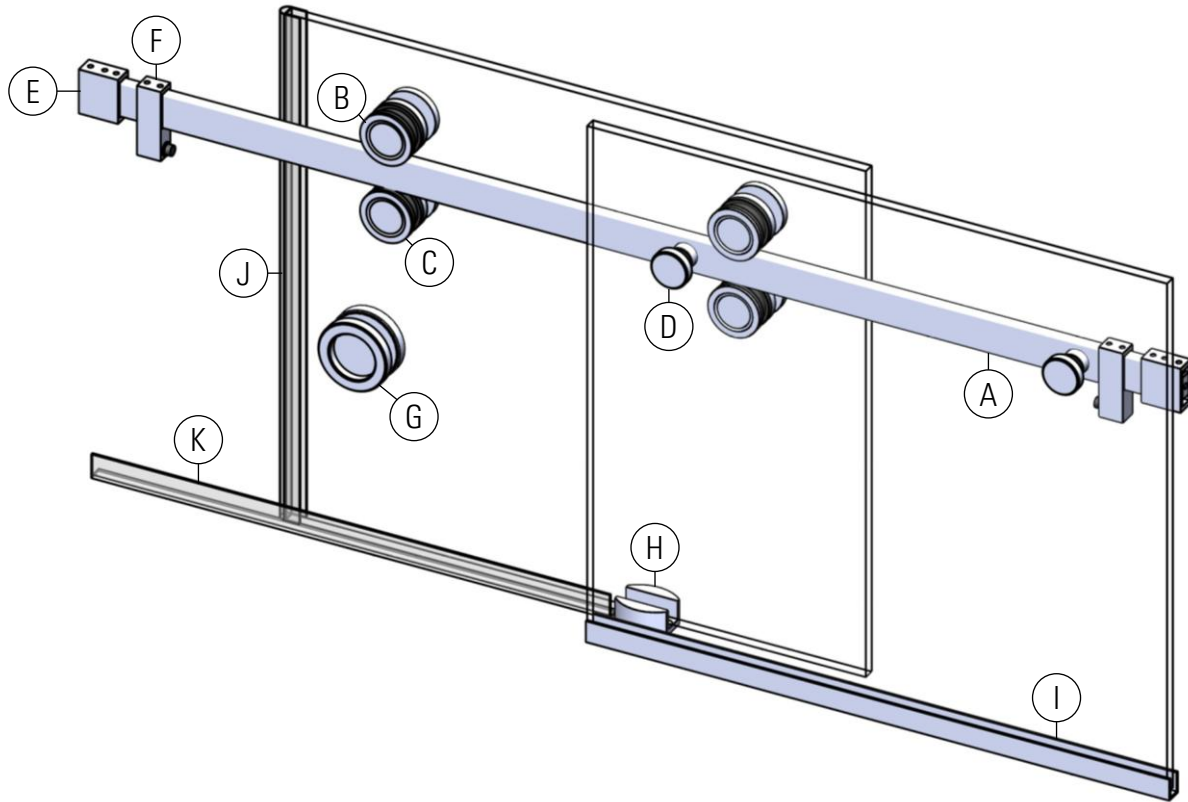


TAIGA

SLIDING SHOWER DOOR SYSTEM

Product Code: TAG81610

portals



* PART	QTY
A Square Header Track – 78-1/2"	1
B Ø1-3/4" Rollers	2
C Ø1-3/4" Anti-Lift Faux Rollers	2
D Panel Fittings	2
E Wall-Track Fittings	2
F Stoppers	2
G Flush Pull	1
H Floor Guide	1
I U-Channel – 39-3/8"	1
J Bulb Seal – 78-3/4"	1
K L Seal – 39-3/8"	1

CARE & MAINTENANCE

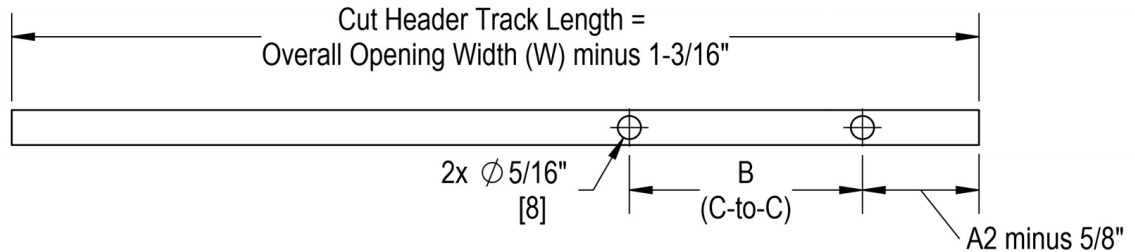
Portals products should be cleaned with water and dried with a soft cloth. Use of harsh or abrasive chemicals may harm product appearance and will void warranty.

WARRANTY

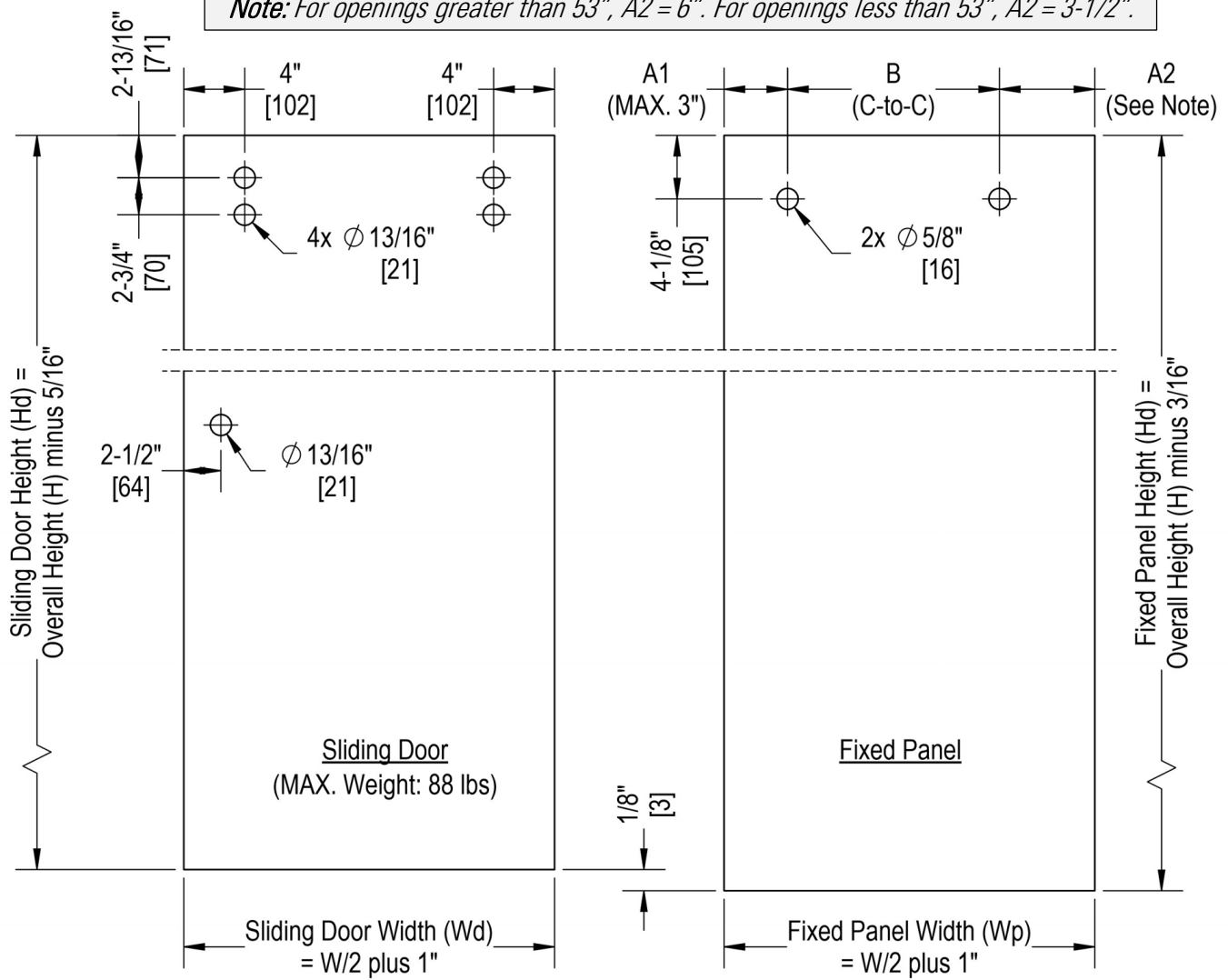
Lifetime warranty for residential use covers defects in material and workmanship of this product.

Glass Thickness	3/8" [10]
Max. Door Weight	88 lbs [40 kg]

HEADER & GLASS FABRICATION



Note: For openings greater than 53", A2 = 6". For openings less than 53", A2 = 3-1/2".



Glass Thickness	3/8" [10]
Max. Door Weight	88 lbs [40 kg]

TAIGA

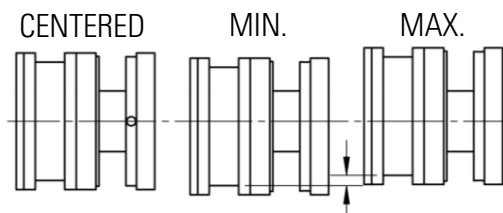
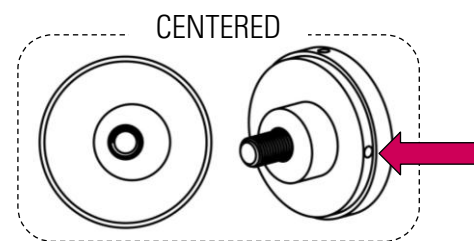
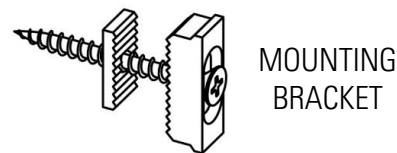
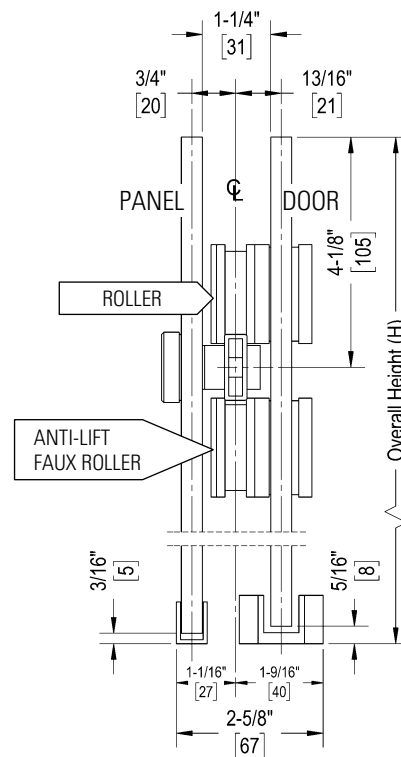
SLIDING SHOWER DOOR SYSTEM

Product Code: TAG81610

portals

INSTALLATION

1. Determine installation location – *note that header track is not centered between the door and panel*
2. Measure space, cut header track to size, and drill $\varnothing 5/16"$ holes completely through track. Disassemble panel fittings and secure to track, leaving the threaded stud exposed.
3. Remove mounting brackets from wall-track fittings and install 4-1/8" below overall shower height at header track centerline. Installing the 2-piece brackets as shown in the image allows fine vertical adjustments.
4. Place stoppers and wall-track fittings on header track ends, and mount track by sliding the wall fittings onto the brackets and tightening the set screws. Leave stoppers loose for now.
5. Fasten U-channel to curb, set panel in channel, and attach it to the header track.
6. Prepare door by installing the top set of rollers in "centered" orientation. *Note that only two rollers contain bearings and these must be placed on top.* Set 5/16" shims on curb, place door on shims, and adjust rollers so door hangs properly – note that rollers can be adjusted without the door by using hole highlighted in image. Remove shims and test. Adjust as needed.
7. Place masking tape on curb where guide will be located. With door in closed position slide the guide into place and then trace around it. Remove door and mark where to drill holes. Apply silicone to holes before installing the guide.
8. Install bulb seal on door, hang the door, and then re-test to assure it is properly adjusted. Install anti-lift rollers on door and adjust them so the door cannot be lifted.
9. Determine stopper positions that prevent door from colliding with walls and then secure them to header track with set screws.
10. Install L seal below door.



Glass Thickness	3/8" [10]
Max. Door Weight	88 lbs [40 kg]